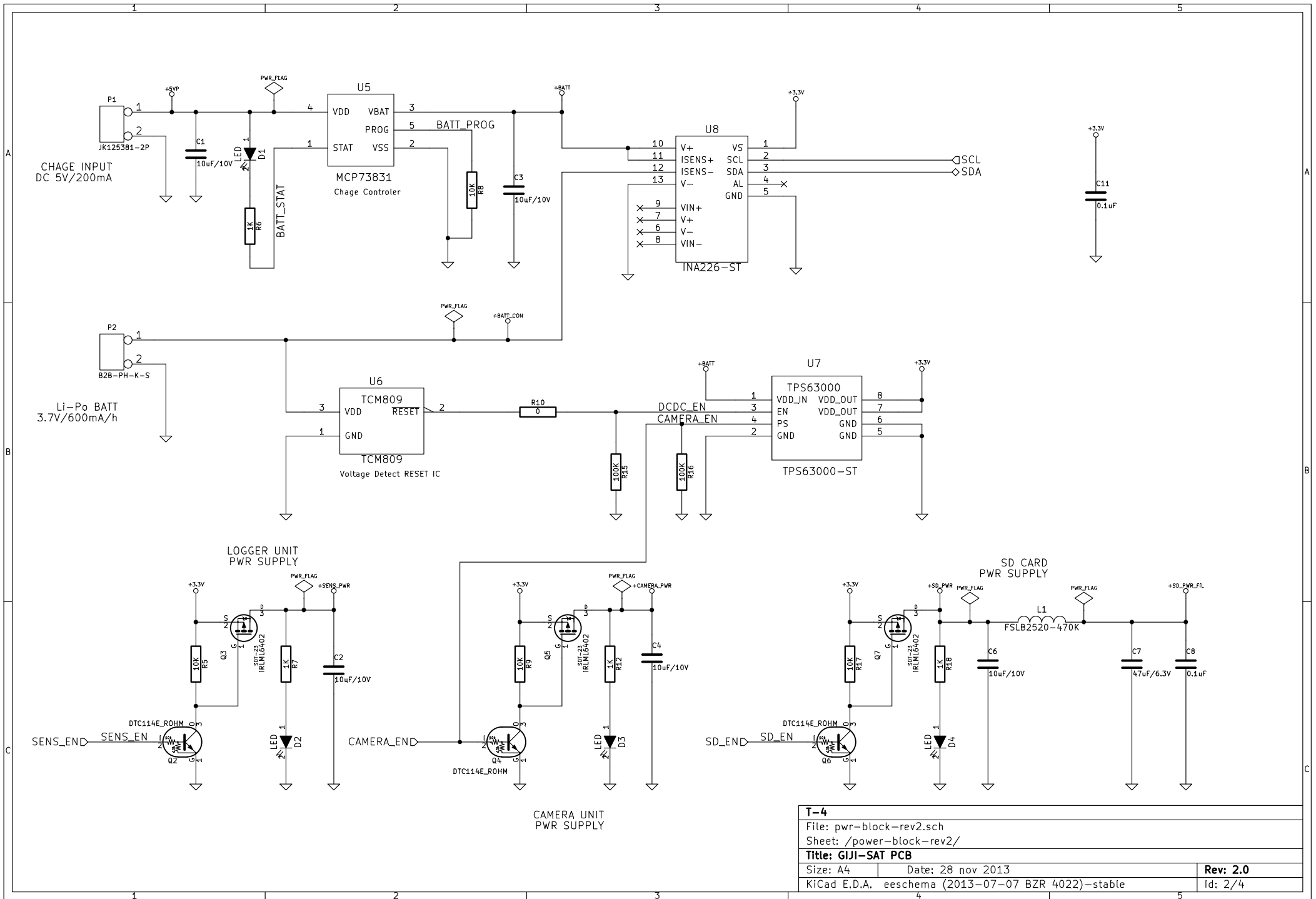
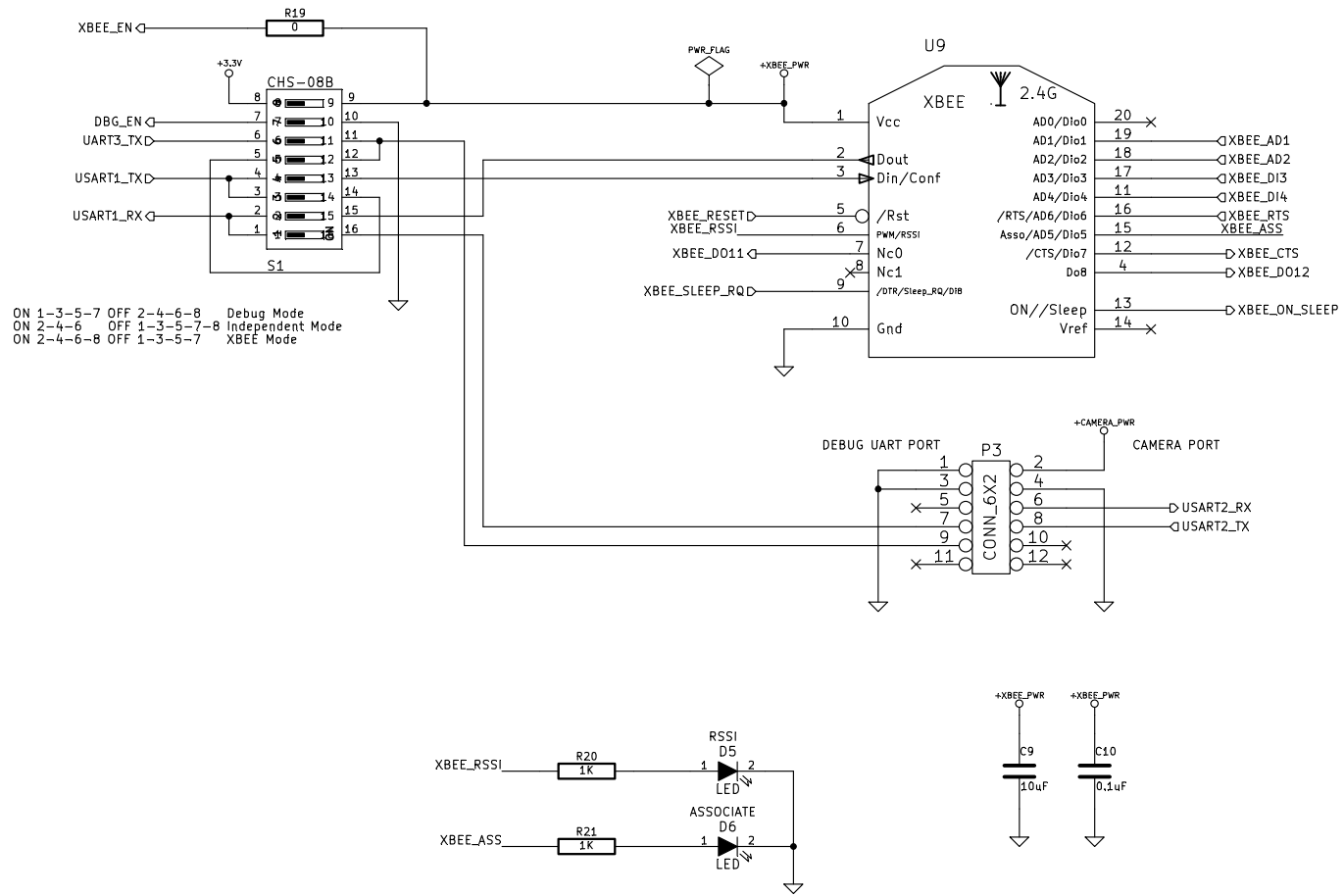


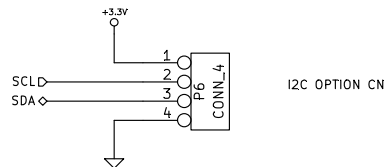
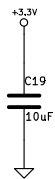
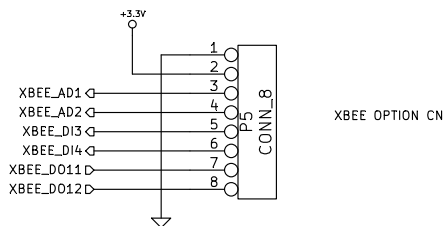
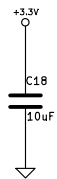
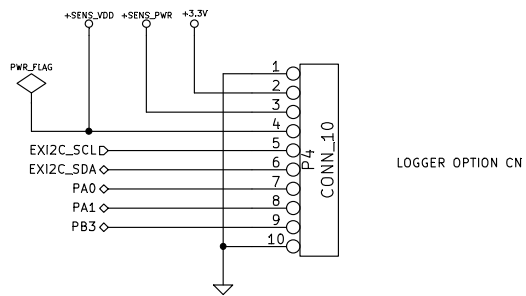
T-4		
File: gijisat-rev2.1.sch		
Sheet: /		
Title: GJI-SAT PCB		
Size: A4	Date: 28 nov 2013	Rev: 2.1
KiCad E.D.A. eschema (2013-07-07 BZR 4022)-stable		Id: 1/4



T-4		
File: pwr-block-rev2.sch		
Sheet: /power-block-rev2/		
Title: GIJI-SAT PCB		
Size: A4	Date: 28 nov 2013	Rev: 2.0
KiCad E.D.A. eschema (2013-07-07 BZR 4022)-stable		Id: 2/4



T-4		
File: xbee-block.sch		
Sheet: /xbee-block/		
Title: GIJI-SAT PCB		
Size: A4	Date: 28 nov 2013	Rev: 1.0
KiCad E.D.A. eschema (2013-07-07 BZR 4022)-stable		Id: 3/4



T-4		
File: cn-block-rev2.sch		
Sheet: /cn-block-rev2/		
Title: GJI-SAT PCB		
Size: A4	Date: 28 nov 2013	Rev: 2.0
KiCad E.D.A. eeschema (2013-07-07 BZR 4022)-stable		Id: 4/4